

2nd half **2024** **PROMOTIONS**



Leading in Innovation



Valid from 1st July to 15th December, 2024

www.tungaloy.com

TINY^{INI}M TURN

Valid from 1st July to 15th December, 2024



EFFICIENCY AND PROFITABILITY TO YOUR SMALL BORING OPERATIONS AS SMALL AS Ø0.6 MM

New SH725 PVD grade provides a good combination of wear and fracture resistance, ensuring long tool life and wear prediction.

BUY 4 solid carbide bars

AND

GET 1 corresponding sleeve

**25 %
additional
discount!**

Solid Carbide bars (Grade SH725):

J/TBTR/L...
J/TBPR...
J/TBUR...
J/TBCR...
J/TBBR...
J/TBIR...
J/TBSR...
J/TBRR...
J/TBFR/L...
J/TBGR/L...

Sleeve:

JBBS...
JBBS-4N



video



e-catalog



INTERNAL GROOVING AND THREAD TURNING TOOL SERIES FOR BORES AS SMALL AS Ø5 MM

It offers unmatched precision and edge repeatability, thanks to its unique clamping system for rigid stability.
Featuring the latest PVD insert grade, SH7025, for superior surface quality and process security.

BUY 10 inserts

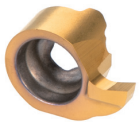
AND

GET 1 corresponding
toolholder

FREE
of charge!

Inserts (Grade SH7025):
MGR...
MTR...

Toolholder:
A/E-SMR...



MGR
Grooving



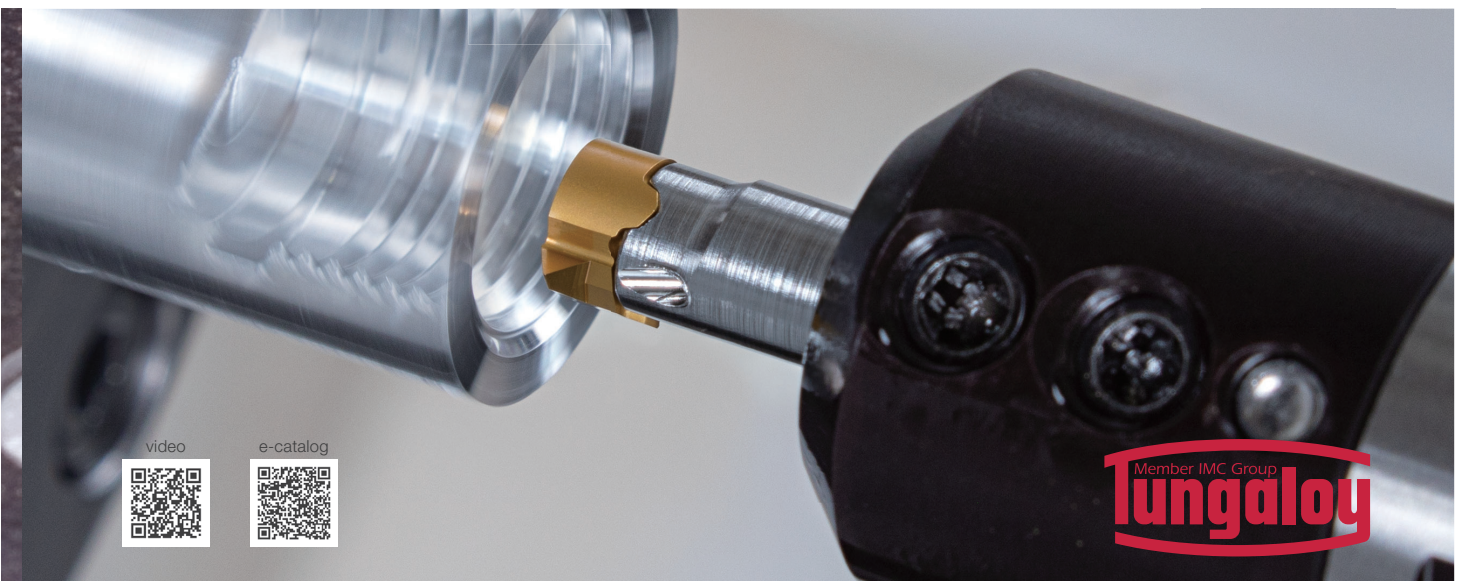
MGR
Profiling (Full R)



MTR
Threading



A/E-SMR...



video



e-catalog



FACE M^{INI}CUT

Valid from 1st July to 15th December, 2024



DEEP FACE GROOVING OF UP TO 10 MM DAXN AND UP TO 9 MM GROOVE DEPTH IS POSSIBLE

Extremely rigid insert clamping ensures tool stability during deep face grooving operations. Sharp cutting edge, combined with SH7025, the latest PVD grade, provides long tool life and superior surface quality.

BUY 10 inserts

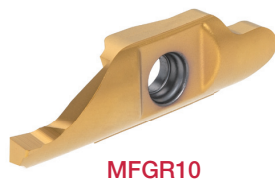
AND

GET 1 corresponding toolholder

FREE
of charge!

Inserts (Grade SH7025):
MFGR...

Toolholder:
A-MFR10...



MFGR10



e-catalog



DOUBLE-ENDED SMALL-SIZE INTERNAL GROOVING INSERTS WITH EXCEPTIONAL FEATURES

Enhanced chatter resistance is achieved through optimized screw placement, which strengthens the insert clamping capability. Larger pockets facilitate more effective and smooth chip evacuation.

BUY 20 inserts

AND

GET 1 corresponding head or toolholder

FREE
of charge!

Inserts:

DGS*S

DTR*S

Head:

S-CTIRS-H...

Toolholder:

CTIR**S



DGS*S

Lower cutting force and superior sharpness

CW = 2, 3 mm



DTR*S

Full radius type

CW = 2, 3 mm



video



e-catalog



MINI **V**LOCK **G**GROOVE

Valid from 1st July to 15th December, 2024



HIGH PRECISION GROOVING AND THREADING TOOL SERIES FOR CNC AUTOMATIC LATHES

Perfect for grooving and threading bar stocks of 12 mm or smaller diameters

BUY 10 inserts

AND

GET 1 toolholder

FREE
of charge!

BUY 10 inserts

AND

GET 1 CHP toolholder
or **1** CHP head

50 %
additional
discount!

Insert:

VGP08/10 (for Grooving)

CW = 0.33 - 1 mm

Insert:

VGT10F (for Threading)

Pitch = 0.4 - 2 mm

TPI = 12 - 64

Cutting edge angle = 55°, 60°

Toolholder:

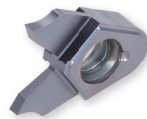
SVER/L...

SVER/L-CHP...

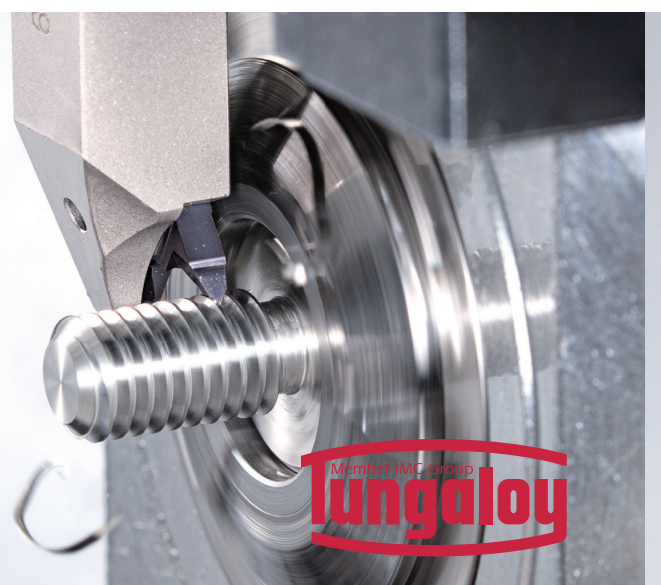
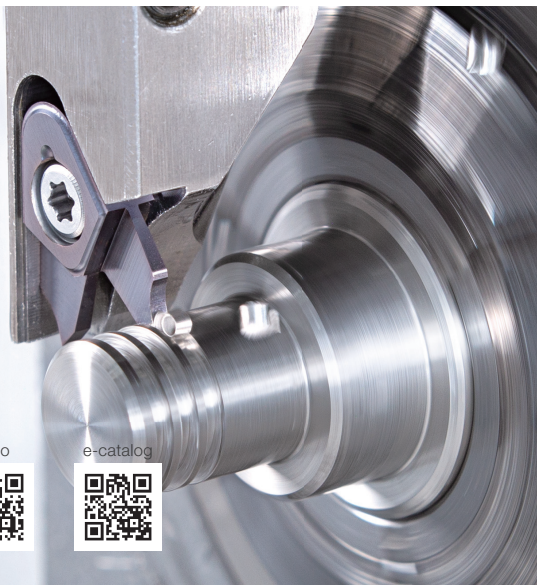
Head:

QC-SVER/L-CHP...

VGP08/10



VGT10F



video



e-catalog



INNOVATIVE TURNING TOOL SERIES FOR CNC AUTOMATIC LATHES AND CAM-DRIVEN LATHES

Ideal for machining small parts of 12 mm or smaller diameters

BUY 10 inserts

AND

GET 1 toolholder

FREE
of charge!

Inserts:

JVPN**R/L (for Grooving and Parting-off)

CW = 0.5, 0.6, 0.8, 1 mm

JVFN45R/L (for Front Turning)

JVBN45/70 (Back Turning)*

JVTN (Threading)*

JVGN (Grooving)*

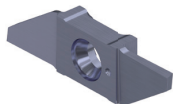
JVNR/L (Blank insert)

Toolholder:

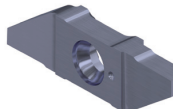
0606, 0707, 0808, and 1010 type

*available from Sept. 2024

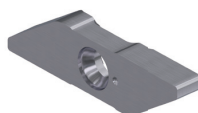
JVPN**R/L



JVFN45R/L



JVNR/L



video



e-catalog



TUNG-TRI

Valid from 1st July to 15th December, 2024



COMPLETE SOLUTION FOR SHOULDER MILLING WITH OUTSTANDING PERFORMANCE AND COST-EFFECTIVE INSERTS

Economical shoulder milling cutter with 3 cutting edged insert with wide range of sizes, grades and diameters

BUY 10 inserts per pocket up to max 50 inserts
AND
GET 1 Cutter

50 %
additional discount!

Limited up to diameter 125 mm

Insert (Grade: T1215, KS05F, T3225, AH8015, AH3135, AH3225, AH120):
TO*T04/06/10/15 - MJ/MM/AJ/NMJ

Cutter bodies:

Bore type:

TPA06/10/15

DC = $\varnothing 32 - \varnothing 125$ mm

Shank type:

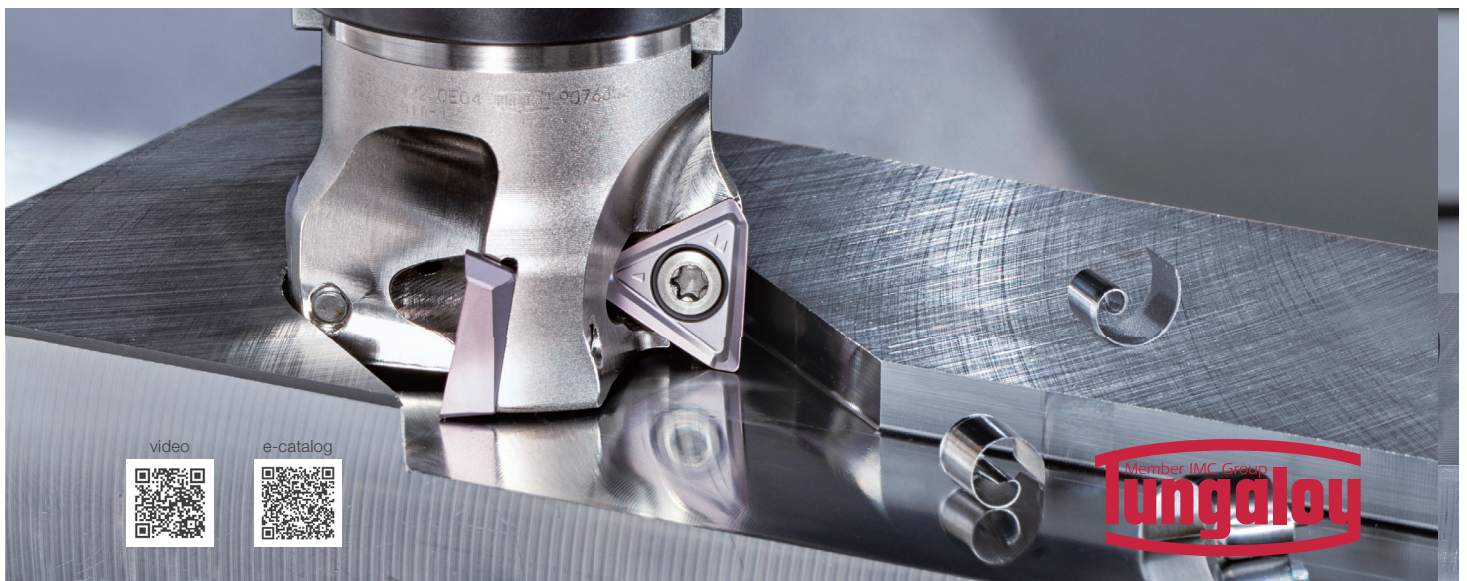
EPA04/06/10/15

DC = $\varnothing 8 - \varnothing 50$ mm

Modular type:

HPA06/10-M

DCX = $\varnothing 16 - \varnothing 32$ mm



video



e-catalog



FACE MILLING CUTTERS WITH UNIQUE INSERT SHIMS FOR EXTRA TOOL RELIABILITY

Carries double-sided tangential inserts with 4 cutting edges for superior tool reliability.

BUY 10 inserts per
AND pocket up to max 50 inserts
GET 1 Cutter

FREE
of charge!

Limited up to diameter 125 mm

Insert (Grades: AH3225, AH8015):

LMMU11/16-MJ

Cutter bodies:

Bore type:

TPM11/16

DC = $\varnothing 50 - \varnothing 125$ mm

TGM16

DC = $\varnothing 100 - \varnothing 125$ mm

Shank type:

EPM11

DC = $\varnothing 32 - \varnothing 80$ mm



Shims



TGM16SA**
APMX 12.4 mm
60° cutter

LMMU11/16-MJ



e-catalog



EXCHANGEABLE HEAD DRILL SYSTEM FOR SUPERIOR DRILLING PERFORMANCE AND LONG TOOL LIFE

Quick drill tip change for reduced machine downtime.

Tool inventory and management costs are significantly reduced as there is no need for regrinding.

BUY 6 drill heads

AND

GET 1 drill body

up to 8xD

50 %
additional
discount!

Drill heads (Grades: AH9130, KS15F):

DMP, DMC, DMF, DMH, DMN

Drill bodies:

TID-F (1.5xD, 3xD, 5xD, 8xD)

TID-R (3.5xD, 6xD, 8xD)

TID-R-E (2xD)

TIDC (3xD, 5xD)

TID-M (2xD, 3xD)

TID-S (2xD)

TID-L-A-M



DMP

Drill dia.:

ø6 - ø25.9 mm

General purpose drilling head ideal for various drilling applications

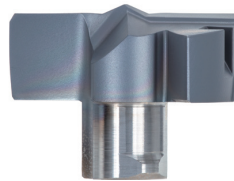


DMC

Drill dia.:

ø6 - ø25.9 mm

High precision drilling head with double-margined drill periphery and self-centering chisel edge



DMF

Drill dia.:

ø6 - ø25.9 mm

180° flat edges for counterboring and flat bottoms



DMH

Drill dia.:

ø6 - ø25.9 mm

General purpose head with enhanced cutting edge



DMN

Drill dia.:

ø6.8 - ø19.5 mm

Drill head with sharp edges for non-ferrous materials



DRILLMEISTER

Valid from 1st July to 15th December, 2024



DRILL BODIES LINEUP



TIDC
Drill dia.:
ø8.5 - ø19.9 mm
3xD and 5xD

TID-F
Drill dia.:
ø6 - ø25.9 mm
1.5xD, 3xD, 5xD, 8xD

TID-R / TID-R-E
Drill dia.:
ø6 - ø19.9 mm
2xD, 3.5xD, 6xD, 8xD

MODULAR DRILL BODIES LINEUP



video

TID-M
Drill dia.:
ø6 - ø18.9 mm
2xD and 3xD
TungFlex connection



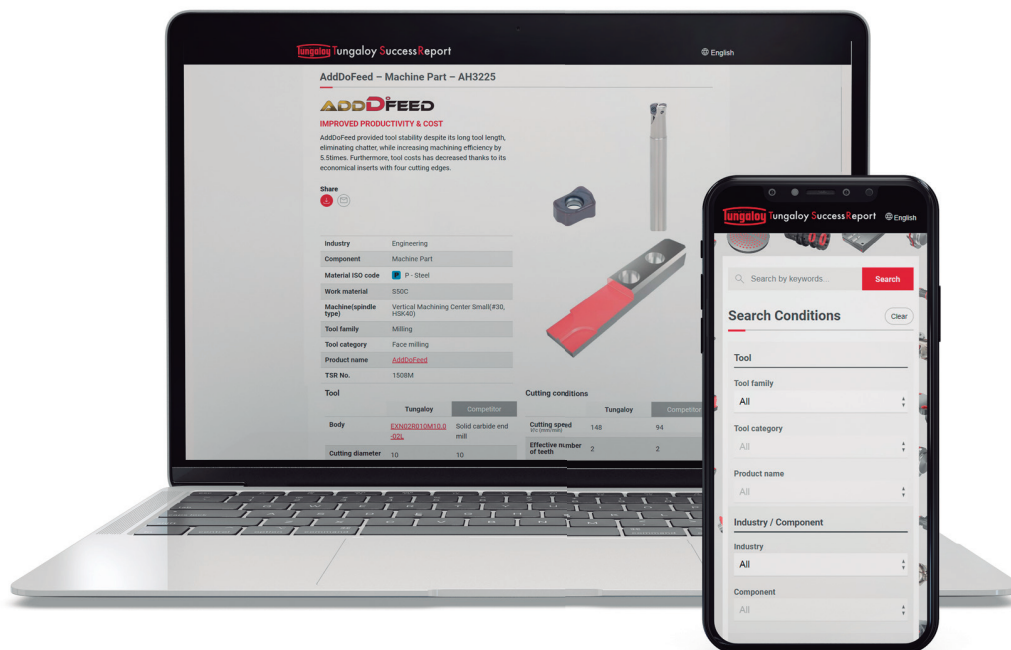
video

TID-L-A-M
Drill dia.:
ø6.5 - ø16.9 mm
TungFlex connection
Drilling+Chamfering /
pre-thread Drilling

YOUR GATEWAY TO TUNGALOY SUCCESS REPORTS!

We invite you to visit the updated TSR platform and discover how Tungaloy's products have successfully met diverse challenges and delivered outstanding results. These reports can provide insights and inspiration for your own applications and projects, offering detailed solutions to succeed in various industrial fields.

Find applications that fit your current needs, elevate your productivity, and solve your production bottlenecks.



tsr.tungaloy.com



11-1 Yoshima Kogyodanchi
Iwaki 970-1144 Japan
tungaloy.com

Leading in Innovation

Distributed by:



Jun. 2024 (TJ)