



# 1st half **2024** **PROMOTIONS**



Leading in Innovation



Gældende fra 1. februar til og med 30. juni 2024

[www.tungaloy.com](http://www.tungaloy.com)



# SH7025



## ACHIEVE ULTIMATE SURFACE QUALITY MACHINING SMALL PARTS RELIABLY!

A unique design that prevents adhesion, wear, and chipping of the cutting edge, ensuring prolonged life and consistently high-quality machined surfaces.

**BUY 40** inserts

AND

**GET 10** corresponding  
inserts

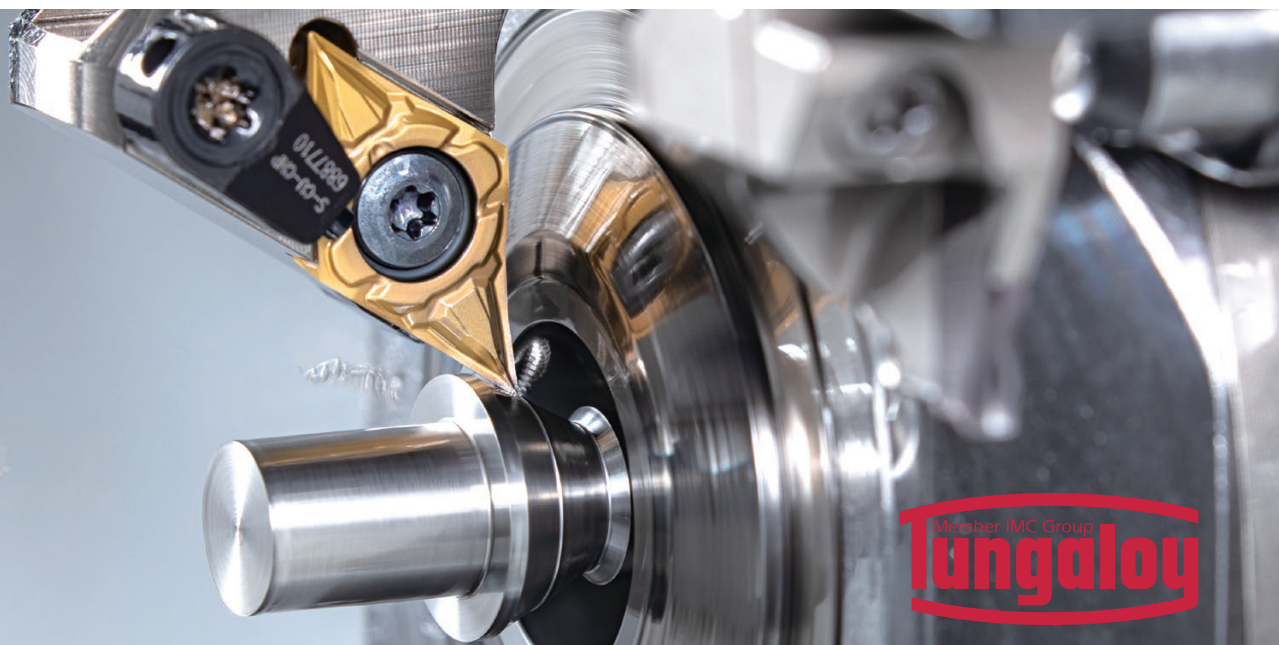
**FREE**  
*of charge!*

insert geometry:

CCGT  
DCGT  
VBGT  
VPGT

Chipbreaker type:

01  
J10  
JP  
JS  
W08



Video



For more  
information

Member IMC Group  
**Tungaloy**

## MODULAR HEAD TURNING TOOLHOLDER SYSTEM FOR SWISS MACHINES

Significantly reduces machine downtime for changing tools and setups

**BUY 1** head and **10** inserts

AND

**GET 1** corresponding shank

**FREE**  
of charge!



ModuMiniTurn inserts (Turning)  
DX\*U07  
VXGU09  
WXGU04

MiniV-LockGroove inserts  
(Grooving & Threading)  
VGP10  
VGT10

TetraMiniCut (Grooving & Threading)  
TCG18...  
TCP18...  
TCS18...  
TCL18...  
TCF18...  
TCT18...

Inserts:  
11ER... (Threading)  
J10R... (Back turning)

TungCut inserts  
(Grooving)  
DGM...  
DGS...  
DTE...  
DTX...  
DTR...  
DTM...  
DGL...

CW = 1.2 - 3.18 mm

Grades:  
AH6235, AH7025, AH8005,  
AH905, KS05F, NS9530,  
T9225, T515

AH725  
(DGS1.2-003, DGS1.4-005,  
DGS1.4-010, DGS2-005,  
DGS2-010)

Video



For more  
information



## EFFECTIVE THREADING SOLUTIONS FOR CNC LATHES, SWISS-TYPE LATHES AND MULTITASKING MACHINES

AH8015 versatile PVD grade for superior wear and chipping resistance in a wide range of materials

**BUY 20** inserts

AND

**GET 1** corresponding shank

**FREE**  
*of charge!*

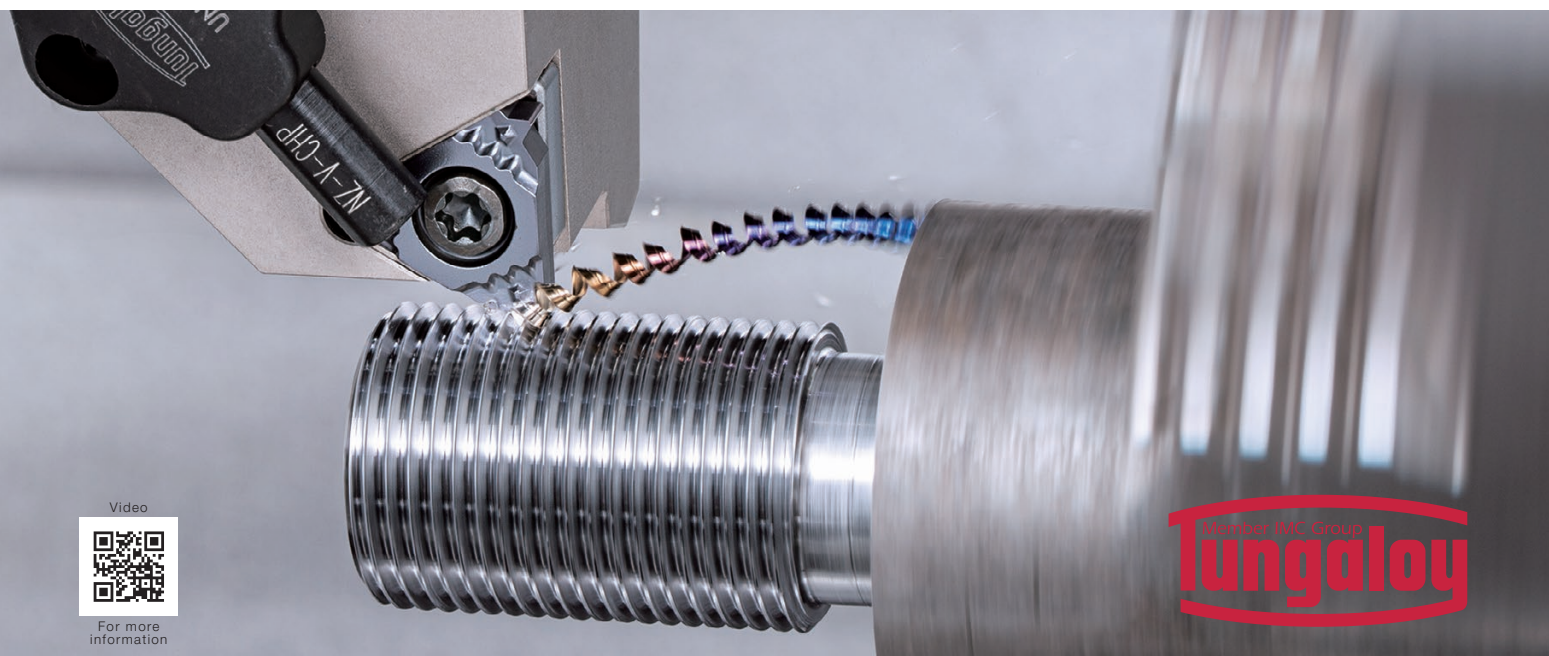
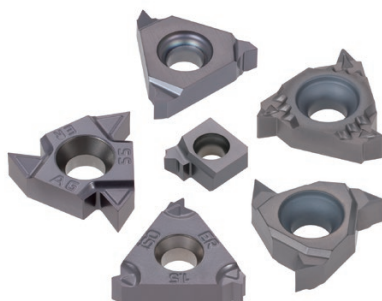
Insert:

3-cornered inserts sizes 11, 16 and 22

1-cornered insert size 6

Grade:

AH8015



Video



For more information

Member IMC Group  
**Tungaloy**

## THREADING INSERTS WITH ECONOMICAL 4-CUTTING EDGES

Sharp cutting edge for reduced cutting load, improving thread surface quality.  
Suitable for thread pitches ranging from 0.4 mm to 3 mm.

**BUY 10** inserts

AND

**GET 1** toolholder at

**FREE**  
of charge!

### Insert:

TCT18R...-ISO (Full Profile insert) Pitch = 0.5 – 1.5 mm

TCT18R...-UN (Full Profile insert) TPI = 16 - 32

TCT18R...-UNJ (Full Profile insert) TPI = 28 - 32

TCT18R...-W (Full Profile insert) TPI = 11 - 28

TCT18FR/R/L-60...(Partial profile insert) Pitch = 0.4 – 3.0 mm

TCT18R/L-55...(Partial profile insert) TPI = 8 – 28 mm

### Grade:

AH725

AH8015

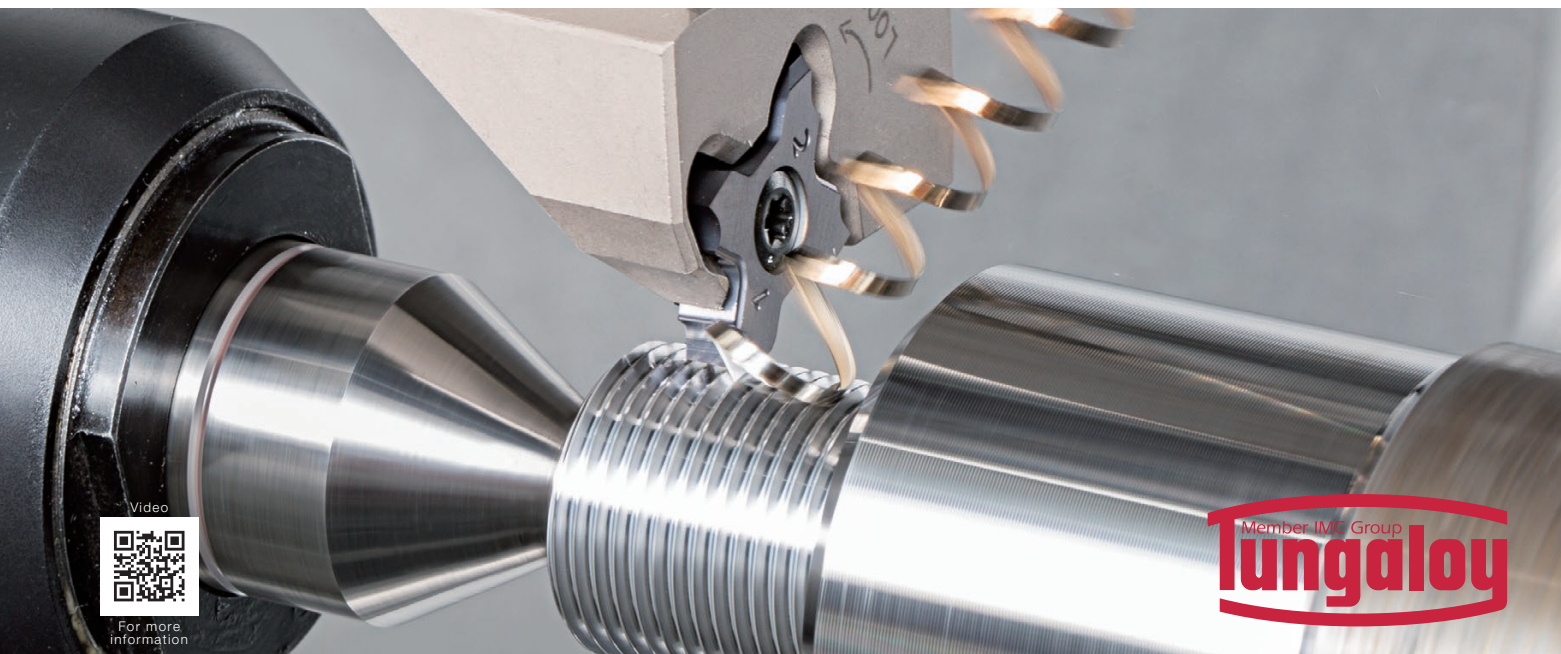
SH725



TCT18\*\*\*-55/60...  
Partial profile



TCT18...-ISO/UN/UNJ/W  
Full profile



Video



For more  
information

Member IMC Group  
**Tungaloy**



## HIGHLY-VERSATILE FACE MILLING CUTTERS FOR A WIDE VARIETY OF MATERIALS

DoTriple-Mill features an improved dovetail clamping structure and offers triple advantage of using square, octagonal, and round inserts in the same pocket

**BUY 10 inserts per pocket**  
AND  
**GET 1 Cutter**  
up to max 50 inserts

**FREE**  
of charge!

Limited up to diameter 125 mm

Insert:

SN\*U-MJ/MH/W (AH120, AH3135,  
AH3225, T1215, T3225 )  
APMX = 6 mm

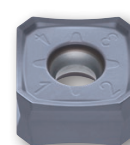
ON\*U-MJ/W (AH120, AH3135,  
AH3225, T1215, T3225 )  
APMX = 3.4 mm

RNMU-MJ (AH120, AH3135, AH3225,  
T1215, T3225 )  
APMX = 6 mm

Bore type:

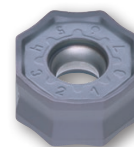
TASN13

DC =  $\varnothing 50$  -  $\varnothing 125$ mm



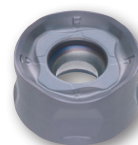
**SN\*U**

Double-sided,  
square insert



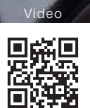
**ON\*U**

Double-sided,  
octagonal insert



**RNMU**

Double-sided,  
round insert



For more  
information

Member IMC Group  
**Tungaloy**

# ULTIMATE HIGH FEED MILLING CUTTER SERIES FOR MAXIMUM PRODUCTIVITY

High-feed cutters reduce machining time in a wide range of applications

**BUY 10 inserts per pocket**  
AND  
**GET 1 Cutter** up to max 50 inserts

**FREE**  
of charge!



**LN\*U0303ZER...**  
For low cutting forces



**LN\*U0303UER...**  
For long tool life and reduced vibration

Limited to inserts 03 type

Insert:

LN\*U03-MH/MJ/ML/MS

(AH130, AH3225, AH725, AH120, AH8015, AH8005)

APMX = 0.9 - 1.0 mm

Shank type:

EXN03R... (Short type)

EXN03R...L/EXN03R...L-C (Long type)

DCX =  $\varnothing$ 16 -  $\varnothing$ 40 mm

Bore type:

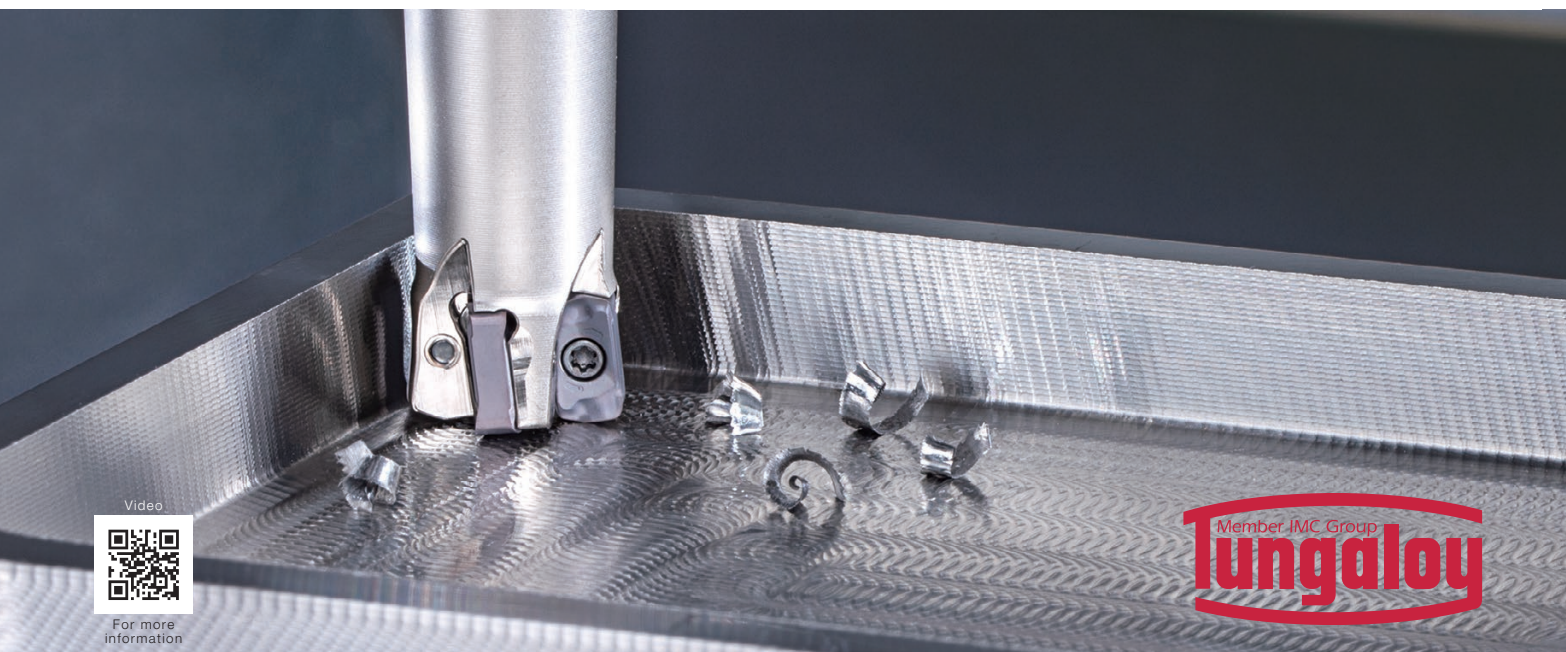
TXN03R...

DCX =  $\varnothing$ 40 -  $\varnothing$ 50 mm

Modular type:

HXN03R...

DCX =  $\varnothing$ 16 -  $\varnothing$ 40 mm



Video



For more  
information

Member JMC Group  
**Tungaloy**



# PROFILING CUTTER FOR 3-DIMENSIONAL MACHINING DUE TO HELICAL CUTTING EDGES

Unique twisted insert geometries assures secure insert clamping for high stability.  
Two types of inserts fit one cutter: radius and high efficiency inserts.

**BUY 10 inserts per pocket**  
AND  
**GET 1 Cutter** up to max 50 inserts

**FREE**  
of charge!

**Insert:**

LNMX04/05/06-MJ/ML (Radius type)  
(AH3135, AH120, AH8015, AH3225)  
APMX = 4 - 6 mm

LNMX04/06-HJ/HL (High-feed type)  
(AH3135, AH120, AH8015, AH3225)  
APMX = 1.3 - 2 mm

**Shank type:**

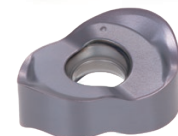
EXLN04/05/06R... (Short type)  
EXLN04/05/06R\*\*L... (Long type)  
DCX =  $\varnothing 20$  -  $\varnothing 40$  mm

**Modular type:**

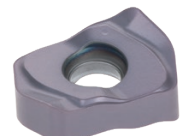
HXLN04/05/06R...  
DCX =  $\varnothing 20$  -  $\varnothing 42$  mm

**Bore type:**

TXLN04/05/06R...  
DCX =  $\varnothing 40$  -  $\varnothing 66$  mm



**LNMX...MJ / ML**  
Radius insert



**LNMX...HJ / HL**  
High-feed insert







11-1 Yoshima Kogyodanchi  
Iwaki 970-1144 Japan  
[tungaloy.com](http://tungaloy.com)

# Leading in Innovation

Distributed by:



**OSG Scandinavia A/S**

Langebjergvænget 16

DK-4000 Roskilde

Tel. 4675 6555

[osg@osg-scandinavia.com](mailto:osg@osg-scandinavia.com)

[dk.osgeurope.com](http://dk.osgeurope.com)



FIND US ON THE CLOUD!  
[machiningcloud.com](http://machiningcloud.com)

Dec. 2023 (TJ)